

North Country STORAGE BARNS



Quality Built Sheds & More...

30th
ANNIVERSARY

www.ncsbarns.com



We would like to express our thankfulness for your support since 1993. Our journey of a quality product delivered and served with excellence has made us what we are today. We thank you for your patronage and our Lord and Savior Jesus Christ for his guidance at work and in our homes.
- The Martin Brothers



In 1993, North Country Storage Barns started as a family owned and operated shed business. We started out as a very small operation with a few siblings within the Martin family. It was a rough road and a large undertaking in the Northern New York area. Over time, locations were added to widen the reach of the company. Today, we have three locations in New York State and service dealers across the Saint Lawrence River in Canada. Through the years, some of the Martins have left the immediate area to pursue other aspirations. Luke, Titus, & Reuben still reside in the immediate area and own and operate North Country Storage Barns.

The ever-increasing need for quality-built sheds has caused us to expand our workforce. It's been our pleasure to be able to increase our product offerings over the years as we have grown. Now over 26 years later, we have a wide range of product offerings, and the sheds are still manufactured with the same mark of excellence as they were at our inception. Materials have changed, and better tools have improved production speed, but the quality you have come to rely upon has not changed. Furniture, gifts, modular homes, and swing sets have now been a huge part of the company also. These products are handcrafted by Amish craftsman in the Lancaster County, PA area and parts of Ohio.

What started with a few young Martin boys has grown into three companies that provide income and work for about forty area residents in. Kozy Kabins is a newer company that provides on-site construction of homes, camps, and permanent garages. Rent A Structure LLC is the rental company that makes sheds, gazebos, and playgrounds more affordable by way of a rent to own program.

Thank you for looking through our catalog. It's a representation of what we have to offer. To see our full product offerings, please make sure to visit our newly updated web site at ncsbarns.com. We hope and pray that our actions demonstrate commitment, dedication, and loyalty to you-no matter if you make a purchase or not. Any interaction with our partners should be top notch. We look forward to the opportunity of serving you with excellence today, tomorrow, and in the future.

2023 PRODUCT CATALOG • TABLE OF CONTENTS

Sheds.....	4-13
Animal Structures	14-17
Hunting Blinds	18
Gazebos	19
Pergolas	20
Pavilions	21
Play Structures	22-25
Rustic Furniture	26-27
Indoor Furniture	28-29
Outdoor Furniture	30-33
Cozy Cabins	34-41
Custom Build (Kozy Kabins)	42-43
Garages (Kozy Kabins)	44-47
Warranty Information	48
Site Prep and Delivery.....	49
Financing	50
Rent to Own	51

FRONTIER SHED



08' x 08'	10' x 10'	10' x 20'	12' x 20'
08' x 12'	10' x 12'	12' x 12'	12' x 24'
08' x 16'	10' x 16'	12' x 16'	

LOW WALL SHED - Wood / Vinyl

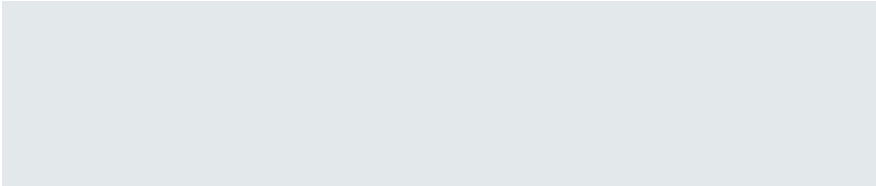
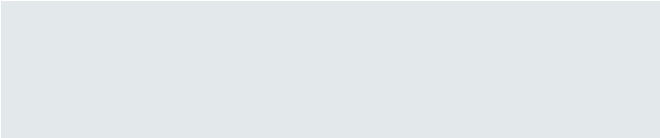


06' x 08'	08' x 12'	10' x 12'	10' x 24'	12' x 20'
06' x 10'	08' x 14'	10' x 14'	12' x 12'	12' x 24'
08' x 08'	08' x 16'	10' x 16'	12' x 14'	
08' x 10'	10' x 10'	10' x 20'	12' x 16'	

Standard Features	8' Wide	10' Wide	12' Wide
Foundational skids	2 each	3 each	4 each
Flooring	5/8" 5-ply	5/8" 5-ply	5/8" 5-ply
Front door height	6'	6'	6'
Front door width	4'	5'	5'
Overall height	10'	10'	10' 8"
Roof pitch	6/12	6/12	5/12
Roofing	Metal	Metal	Metal
Side wall height	6'	6'	7'

Standard Features	6' Wide	8' Wide	10' Wide	12' Wide
Flooring	5/8" 5-ply	5/8" 5-ply	5/8" 5-ply	5/8" 5-ply
Front door height	6'	6'	6'	6'
Front door width	36"	4'	5'	5'
Metal threshold	No	No	No	No
Overall height	8'	8'	8'	8'
Roof pitch	3/12	3/12	3/12	3/12
Roofing	Metal/Shingles	Metal/Shingles	Metal/Shingles	Metal/Shingles
Shutters	No	No	No	No
Side wall height	4'	4'	4'	4'

HIGH WALL SHED - Wood / Vinyl



8' x 8'	10' x 12'	12' x 14'	12' x 36'	14' x 32'
8' x 10'	10' x 14'	12' x 16'	12' x 40'	14' x 36'
8' x 12'	10' x 16'	12' x 20'	14' x 20'	14' x 40'
8' x 14'	10' x 20'	12' x 24'	14' x 24'	14' x 44'
8' x 16'	10' x 24'	12' x 28'	14' x 28'	14' x 48'
10' x 10'	12' x 12'	12' x 32'	14' x 30'	

Standard Features	08' Wide	10' Wide	12' Wide	14' Wide
Flooring	5/8" 5-ply	5/8" 5-ply	5/8" 5-ply	5/8" 5-ply
Front door height	6'	6'	6'	6'
Front door width	4'	5'	5'	6'
Metal threshold	No	No	No	No
Overall height	11'	11'	11'	11'
Roof pitch	3/12	3/12	3/12	3/12
Roofing	Metal/Shingles	Metal/Shingles	Metal/Shingles	Metal/Shingles
Shutters	No	No	No	No
Side wall height	6' 4.5"	6' 4.5"	6' 4.5"	6' 4.5"
Window(s)	1 Small	1 Medium	1 Large	1 Large

COTTAGE SHED - Wood / Vinyl



12' x 32'	14' x 30'
12' x 36'	14' x 32'
12' x 40'	14' x 36'
14' x 20'	14' x 40'
14' x 24'	14' x 44'
14' x 28'	14' x 48'

8' x 8'	10' x 20'
8' x 10'	10' x 24'
8' x 12'	12' x 12'
8' x 14'	12' x 14'
8' x 16'	12' x 16'
10' x 10'	12' x 20'
10' x 12'	12' x 24'
10' x 14'	12' x 28'
10' x 16'	



Standard Features	08' Wide	10' Wide	12' Wide	14' Wide
Flooring	5/8" 5-ply	5/8" 5-ply	5/8" 5-ply	5/8" 5-ply
Front door height	6'	6'	6'	6'
Front door width	4'	5'	5'	6'
Metal threshold	No	No	No	No
Overall height	11'	11'	11'	11'
Roof pitch	7/12	6/12	5/12	4/12
Roofing	Metal/Shingles	Metal/Shingles	Metal/Shingles	Metal/Shingles
Shutters	No	No	No	No
Side wall height	6.5'	6.5'	7.5'	7.5'
Window(s)	1 Small	1 Medium	1 Large	1 Large

QUAKER SHED - Wood / Vinyl

8' x 8'	10' x 20'
8' x 10'	10' x 24'
8' x 12'	12' x 12'
8' x 14'	12' x 14'
8' x 16'	12' x 16'
10' x 10'	12' x 20'
10' x 12'	12' x 24'
10' x 14'	12' x 28'
10' x 16'	12' x 32'



12' x 36'	14' x 30'
12' x 40'	14' x 32'
14' x 20'	14' x 36'
14' x 24'	14' x 40'
14' x 28'	14' x 44'

CHALET SHED - Wood / Vinyl



8' x 10'	10' x 12'
8' x 12'	10' x 14'
8' x 14'	10' x 16'
8' x 16'	10' x 20'
10' x 10'	

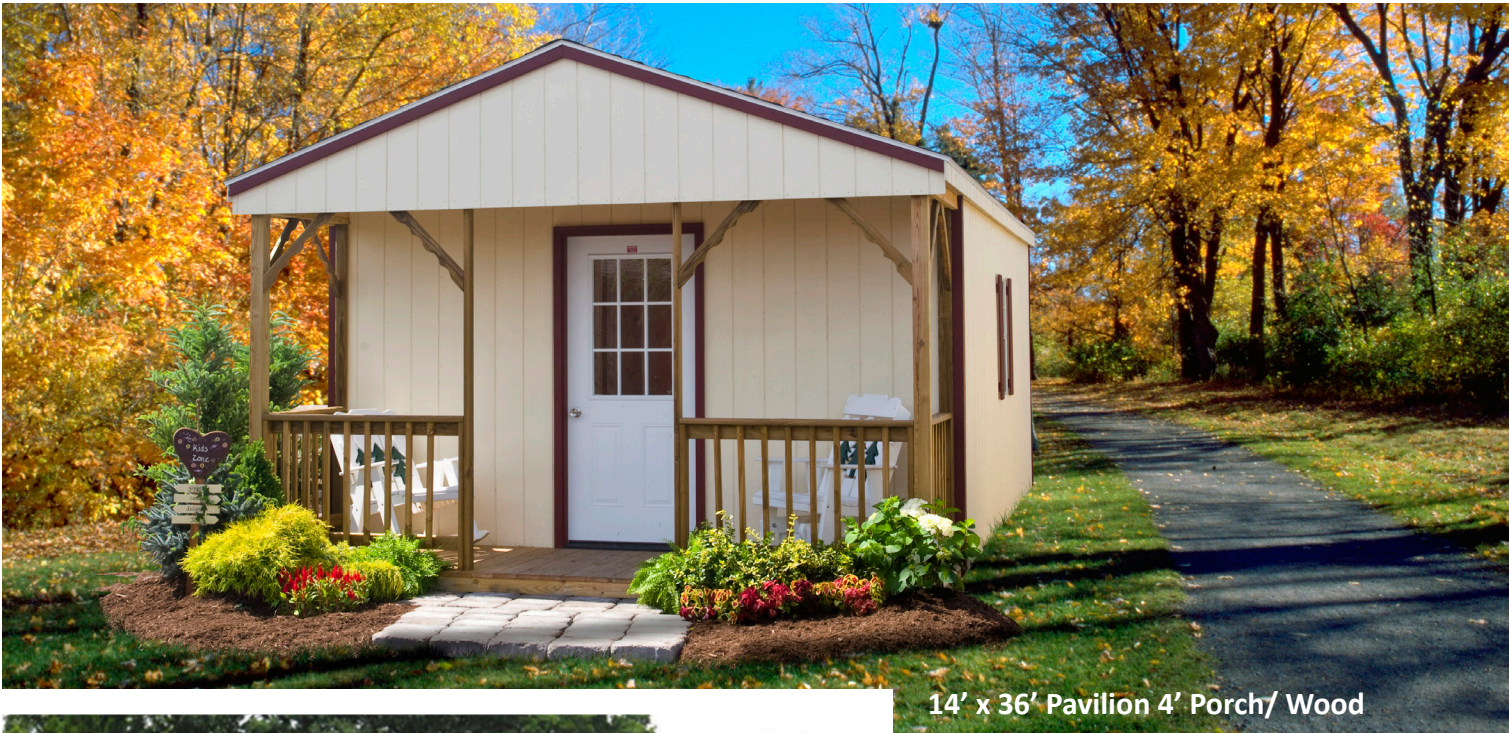
12' x 12'	12' x 24'
12' x 14'	12' x 28'
12' x 16'	12' x 32'
12' x 20'	12' x 36'



Standard Features	08' Wide	10' Wide	12' Wide	14' Wide
Flooring	5/8" 5-ply	5/8" 5-ply	5/8" 5-ply	5/8" 5-ply
Front door height	6'	6'	6'	6'
Front door width	4'	5'	5'	6'
Metal threshold	No	No	No	No
Overall height	11'	11'	11'	11'
Roof pitch	7/12	6/12	5/12	4/12
Roofing	Metal/Shingles	Metal/Shingles	Metal/Shingles	Metal/Shingles
Shutters	No	No	No	No
Side wall height	6.5'	6.5'	7.5'	7.5'
Window(s)	2 Small	2 Medium	2 Large	2 Large

Standard Features	08' Wide	10' Wide	12' Wide
Flooring	5/8" 5-ply	5/8" 5-ply	5/8" 5-ply
Front door	5 11" 9 lite	5 11" 9 lite	5 11" 9 lite
Gable door width	4'	5'	5'
Overall height	11'	11'	11'
Roof pitch	7/12	7/12	7/12
Roofing	Metal/Shingles	Metal/Shingles	Metal/Shingles
Shutters	Yes	Yes	Yes
Side wall height	6' 4.5"	6' 4.5"	6' 4.5"
Truss screws	Yes	Yes	Yes
Window(s)	2 Small	2 Medium	2 Large

PAVILION - Wood / Vinyl



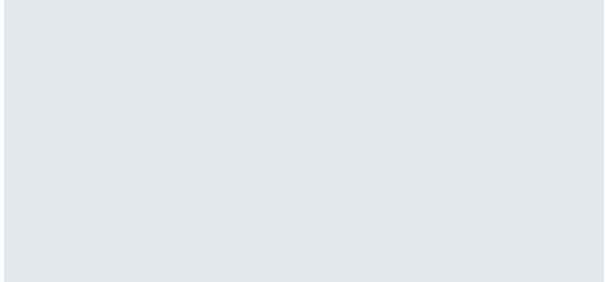
14' x 36' Pavilion 4' Porch/ Wood



10' x 16' - 4'	12' x 20' - 6'	14' x 30' - 4'
10' x 16' - 6'	12' x 24' - 4'	14' x 30' - 6'
10' x 20' - 4'	12' x 24' - 6'	14' x 32' - 4'
10' x 20' - 6'	12' x 28' - 4'	14' x 32' - 6'
12' x 14' - 4'	12' x 32' - 6'	14' x 36' - 4'
12' x 14' - 6'	14' x 24' - 4'	14' x 36' - 6'
12' x 16' - 4'	14' x 24' - 6'	14' x 40' - 4'
12' x 16' - 6'	14' x 28' - 4'	14' x 40' - 6'
12' x 20' - 4'	14' x 28' - 6'	

Standard Features	10' Wide	12' Wide	14' Wide
Flooring	5/8" 5-ply	5/8" 5-ply	5/8" 5-ply
Front door	6' 8" - 9 lite	6' 8" - 9 lite	6' 8" - 9 lite
Overall height	11'	11'	11'
Roof pitch	5/12	5/12	4/12
Roofing	Metal/Shingles	Metal/Shingles	Metal/Shingles
Shutters	Yes	Yes	Yes
Side wall height	7.5'	7.5'	7.5'
Window(s)	3 Medium	3 Large	3 Large

HIGH WALL VEHICLE STORAGE - Wood / Vinyl



12' x 20'	12' x 36'	14' x 28'	14' x 40'
12' x 24'	12' x 40'	14' x 30'	14' x 44'
12' x 28'	14' x 20'	14' x 32'	14' x 48'
12' x 32'	14' x 24'	14' x 36'	

Standard Features	12' Wide	14' Wide
Flooring	3/4" PT	3/4" PT
Front door w/ lites	09' x 07'	09' x 07'
Metal sill plate	Yes	Yes
Overall height	11'	11'
Roof pitch	3/12	3/12
Roofing	Metal/Shingles	Metal/Shingles
Shutters	No	No
Side door wood	36"	36"
Side wall height	6' 4.5"	6' 4.5"
Window(s)	2 Large	2 Large

COTTAGE VEHICLE STORAGE - Wood / Vinyl



12' x 18'	12' x 32'	14' x 28'	14' x 40'
12' x 20'	12' x 36'	14' x 30'	14' x 44'
12' x 24'	14' x 20'	14' x 32'	
12' x 28'	14' x 24'	14' x 36'	

Standard Features	12' Wide	14' Wide
Flooring	3/4" PT	3/4" PT
Front door w/ lites	09' x 07'	09' x 07'
Metal sill plate	Yes	Yes
Overall height	11'	11'
Roof pitch	5/12	4/12
Roofing	Metal/Shingles	Metal/Shingles
Shutters	Yes	Yes
Side door fiberglass	36"	36"
Side wall height	7' 4.5"	7' 4.5"
Window(s)	2 Large	2 Large

SHED OPTIONS

Lofts



Cottage High Wall

Loft Sizes
4' x 8' up to 10' x 14'

Benches / Shelves



Bench Sizes
8' • 10' • 12' • 14'
Let us know how high and how far apart you want them at time of under.

Electrical



Packages
1. 2 outlets, 1 light, 1 switch and 1 - 100 amp panel
2. 4 outlets, 2 lights, 1 switch and 1 - 100 amp panel
3. 6 outlets, 3 lights, 1 switch and 1 - 100 amp panel
NCSB is not permitted to connect the electrical service to the structure.

Ramps



Ramp Sizes
4' • 5' • 6' • 8'
All ramps are 4' deep and the width above is approximate.
Pressure-treated 2" x 6" lumber

Supports



Extra 4" x 4"

Log Siding



+25% to the structure price

LP Clapboard



+25% to the structure price

Board & Batten



+15% to the structure price

Overhang



12' wide or less add a 6" overhang

HORSE BARNS, SHED ROWS & RUN-INS

Trailside Barn

30' x 24'
30' x 30'
30' x 36'
30' x 40'
30' x 48'
32' x 36'
32' x 40'
36' x 36'
36' x 40'



Run Ins

08' x 08' 10' x 16'
08' x 10' 10' x 20'
08' x 12' 10' x 24'
10' x 10' 12' x 12'
10' x 12' 12' x 16'
10' x 14'

High Country Barn

30' x 24' 32' x 48'
30' x 30' 34' x 30'
30' x 36' 34' x 36'
30' x 40' 34' x 40'
30' x 48' 34' x 48'
32' x 36' 36' x 20'
32' x 40' 36' x 24'



Shed Row

12' x 12' 12' x 24'
12' x 14' 12' x 30'
12' x 16' 12' x 36'
12' x 18' 12 x 40'
12' x 20'

Monitor Barn

30' x 20' 32' x 24'
30' x 24' 32' x 30'
30' x 30' 32' x 36'
30' x 36' 32' x 40'
30' x 40' 36' x 36'
30' x 48'



It's one thing to have a horse barn, it's another to have a horse barn you love!

Customizing your horse barn kit means you'll not only get the exact look you want, but the unique functions you value as well!

We offer installation on dozens of features and accessories that make your horse barn kit completely unique and personalized to meet your needs.

Some of the most popular custom horse barn features customers appreciate are:

- Custom Lean To
- Chew Guards
- Cupola and Horse Weather Swirl
- Drop Vents
- Feed hole designs
- Gable vents
- Metal Dutch Doors
- Service Doors with Window
- And More!**



DOG KENNELS

TRADITIONAL



Traditional Series Standard Features:

- R-7 Insulation
- 20" Plexiglass dog door(s)
- 5/8" Pressure-treated plywood flooring with epoxy paint 30-year Architectural shingles
- Composite decking in the dog run area
- 18" x 23" windows

ELITE



Elite Series Standard Features:

- Wider trim
- Larger and wider overhangs
- Steeper roof pitch
- R-7 Insulation
- 20" Plexiglas dog door(s)
- 5/8" Pressure-treated plywood flooring with epoxy paint 30-year Architectural Shingles
- Composite decking in the dog run area

CHICKEN COOPS



Combination



Dutch



Lean-To



A-Frame

STANDARD FEATURES

Paint or oil based stain • keyed entry door • chicken ramp • nesting boxes • roosting bar
vent lid or vent • slider windows with screen • asphalt shingles • LP Tech Shield sheathing
aluminum drip edge • LP Flooring • pressure treated legs epoxy floor • pressure treated 4" x 4" runners

DOG HOUSES



COMMERCIAL KENNELS AVAILABLE



<u>A-FRAME</u>	<u>LEAN-TO</u>	<u>COMBO</u>	<u>QUAKER</u>	<u>DUTCH</u>	<u>TRACTOR</u>
3' X 3	3' x 4'	4' x 6'	3' x 4'	4' x 4'	3' X 3'
4' X 4'	3' x 5'	4' x 8'	4' x 4'	4' x 6'	3' X 4'
4' X 6'	4' x 5'	6' x 8'	4' x 6'	4' x 8'	4' X 4
6' X 10'		6' x 10'	4' x 8'	6' x 6'	
8' x 10'		6' x 12'	5' x 6'		
12' x 24			5' x 8'		
			7' x 12'		

HUNTING BLINDS



360 Hunting Blinds

With solid wood frame construction and seamless acrylic roof, the 360 Series is built to provide hunters with many seasons of comfortable, weatherproof hunting. Our windows feature a window raising mechanism – a perfectly silent, one handed operation that is ideal for gun or archery hunting. The 360 Hunting Blind ships in a kit form with fully complete individual wall panels to allow for quick and easy two-person assembly on-site.

Some of the Blinds and Stands that we offer at North Country Storage Barns:

- 12' Tower Stand
- 4' Tower Stand
- 5' x 5' Shanty Hunter
- 6' x 6' 360 Pro
- 6' x 6' 360 Shootin House
- 8' – 11' Adjustable Stand
- 8' Metal Tower Stand
- 6' Trailer Stand

**Base not included*



GAZEBOS



Octagon Gazebo (Wood or Vinyl) 6',8',10',12',14' and 16'

Oval Gazebo (Wood or Vinyl) 8'x10' up to 14'x24"

Rectangle Gazebo (Wood or Vinyl) 8'x 8' up to 14'x 24'

Standard features Cedar

- Western red cedar is a richly textured, fragrant and lustrous wood.
- The natural oils in western red cedar help the wood resist insect attack and decay.
- As a dimensionally stable wood, cedar lies flat and stays straight.
- If left unstained/unsealed, western red cedar will weather to a silver gray patina.
- Add a cedar stain/sealer to keep your cedar gazebo looking new for years.

Standard features Treated Pine

- #1 grade southern yellow pine is treated with an eco-friendly carbon based formula.
- Eco-friendly treatments protect the wood against termite damage and fungal decay.
- Kiln drying pine after treatment allows it to be painted or stained immediately.
- Treated pine gazebos are our most economical gazebo option.

Standard features Vinyl w/Wood Inserts

- Heavy duty vinyl sleeves protect #1 grade treated pine posts, rails and braces.
- As an eco-friendly recyclable plastic, vinyl has an incredibly long lifespan.
- Vinyl gazebos are virtually maintenance free and never need to be stained or painted.
- Providing the best value, vinyl gazebos are our most durable and long-lasting option.

PERGOLAS



Pergola Sizes (Wood or Vinyl) 8' x 8' up to 16' x 32'

Cozy Retreat Standard features	Picnic Paradise Standard features	Celebration Center Standard features	(Pressure Treated or Cedar) Standard features Oasis	Oasis Rough Sawn Cedar Standard features
<ul style="list-style-type: none">• Double 2"x8' header (on 2 sides) w/Corner Braces• 2"x6' Runners w/ Decorative Ends• 2"x2' Runner Top Runner• 5'x5' Post• 16" Post Base for Cedar or Pressure Treated• Double 2"x6' Return Beams on on 2 sides w/ corner braces.• Mounting Brackets	<ul style="list-style-type: none">• Double 2"x6' Header w/ Double Corner Braces• Top Header Plates• 2"x6' Runners w/ Decorative Ends• 2"x4' Top Runners (except Vinyl 2'x2')• 5'x5" Post Base• 36" Post Base• Mounting Brackets	<ul style="list-style-type: none">• Double 2"x8' Header (on 2 sides) w/Corner Bracket• 2"x6' Arched Runners w/ Decorative Ends• 2"x4" Top Runners• 5'x5' Posts• Mounting Brackets	<ul style="list-style-type: none">• Double 2"x6' Header Beams• 2"x6' Runners Spaced 16" OC• 2"x45" Top Runners Spaced 16" OC• 8'x8' PVC Columns or 7"x7" Wood Columns• 16" Skirt for Cedar or Pressure Treated• Mounting Brackets	<ul style="list-style-type: none">• 4"x10' Header Beams• 3"x8' Runners Spaced 24" OC• 3"x6'Top Runner Spaced 24' OC

PAVILIONS



Vinyl Standard Features

No warping, cracking, or splitting • 6" x 6" Posts • 6/12 Roof pitch • Asphalt shingles
10' x 10' up to 20' x 28'



Wood Standard Features:

Appearance Grade Pressure Treated Wood
Stained clear or cedar color
Asphalt Shingles
5" x 5" Posts
6/12 Pitch roof
10' x 10' up to 20' x 28'



WOODEN PLAY STRUCTURES



CHAMPCRAFT SWING SETS



POLY / VINYL SWING SETS



PLAYHOUSES



10' x 14' Cabin
with included porch & loft and porchswing

Cabin Standard Features:

- Built-in covered porch
- Cedar stained floor
- Vinyl railings and posts
- 5' side walls
- Four windows
- Shutters
- Loft with a window
- Adult sized door
- Child's front entry door
- Straight trim around roof

Cottage Standard Features:

- Loft w/ window and shutters
- 3 windows and shutters
- 5' side walls
- Adult sized door
- Child's front entry door
- Straight trim around roof
- 3' Porch with roof



08' x 12' Cottage
with included porch and porchswing



06' x 08' Victorian
Porch Optional Upcharge

Victorian Standard Features:

- 2 Windows
- Shutters
- Window boxes
- Dormer with a window
- Scalloped trim
- Two vents
- Adult sized door
- Child's front entry door



A - Stump Table
B - Farm Bench
C - Wagon Wheel Chair
D - Love Seat
E - Spindle Coffee Table
F - Ottoman
G - Sofa

H - Chair
I - Colorado Aspen Pub Table
J - Colorado Aspen Bar Stool
K - Solid Top Table
L - Stick Back Chair
M - 4' Farm Bench
N - Colorado Aspen Mirror

O - Colorado Aspen 6 Drawer Dresser
P - Colorado Aspen Blanket Chest
Q - Colorado Aspen Grand Bed
R - Colorado Aspen 4 Drawer Chest
S - Pub Table
T - Stick Back Bar Stool

INDOOR FURNITURE



HOOSIER CABINET



MICROWAVE HUTCH



SHAKER CORNER CABINET



SHAKER END TABLE



SHAKER COFFEE TABLE



VENICE SIDE CHAIR



LARGE PIE SAFE



HUNT BOARD



TRASH BIN CABINET
WITH DRAWER



KITCHEN ISLAND



LANCASTER CABINET



BENCH WITH DRAWERS

**Call your local store for lead time, availability and pricing.*

OUTDOOR FURNITURE



Many color options are available for assorted outdoor furniture.

Ask a sales associate for further assistance.



LIGHTHOUSES



BIRD HOUSES & MAILBOXES



WISHING WELLS



WINDMILLS

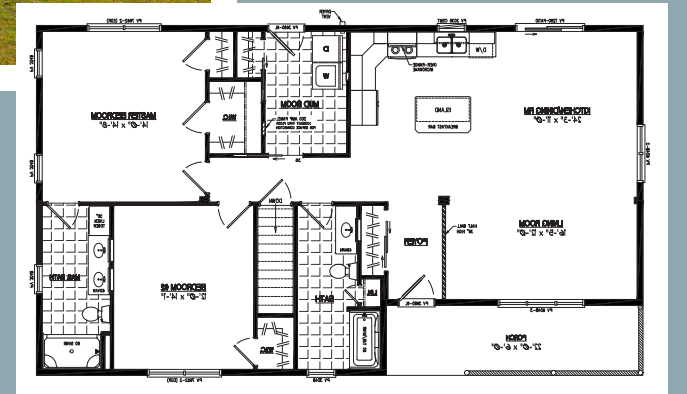


Many color options are available for assorted outdoor items.
Ask a sales associate for further assistance.

Certified Modular Cabins



Modular - Frontier Style



At Cozy Cabins, our goal is to build quality modular log cabins that will last folks for years and years. We combine traditional values of log home living with modern advancements that allow us to be a premier log cabin builder for the Northeast. Utilizing prefab construction, our log home packages include not only beautifully finished exteriors but also a welcoming knotty pine interior, custom solid wood cabinetry, and much more! Allow us to manufacture and fully finish your new cabin, so you can spend less time stressing and more time enjoying your brand new log home.

Standard Features Include:

- Floor Constructed with 2x10 floor joists.
- Walls Constructed with 2x6 studs.
- Roof Engineered Trusses spaced at 24" o/c.
- Roof decked with 5/8" OSB
- Walls insulated at R-27, Ceiling insulated at R-49
- Standard package contains engineered white oak tongue and groove wood floors
- Walls and Ceilings finished with 3/4" tongue and groove knotty-pine boards.
- Knotty pine solid wood interior doors
- Solid pine cabinetry with full-extension, soft-close doors and drawers with Wilsonart laminate countertops.
- Includes all plumbing fixtures and fiberglass tub/shower units.
- 200 amp panel box installed.
- Ceiling fans with lights in living room and bedrooms, outside light on porch and interior/exterior receptacles.
- LED Lighting indoor and out door. Smoke/CO alarm in hallway and loft area and smoke alarm in each bedroom.

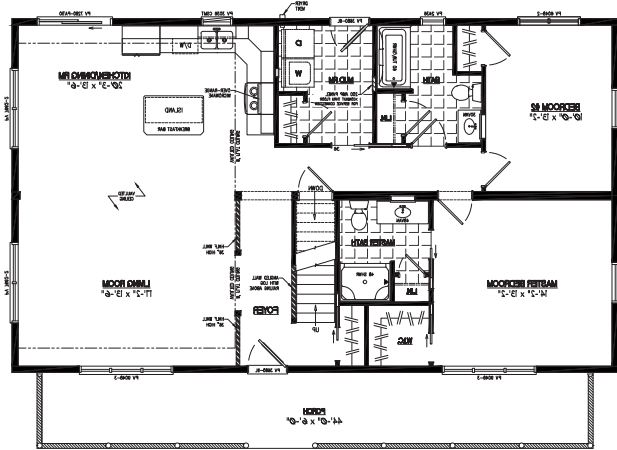
The biggest benefit to our Frontier log home is that it is only one story. This is an advantage to couples looking to retire and limit regularly going up and down stairs. Not to mention, this ranch style log home features a gently sloped ceiling in the main rooms for a more open and spacious feel. Our clients also love the 6'x22' recessed corner porch that gives them the privacy they want while still allowing them to enjoy the outdoors. We always pride ourselves on quality craftsmanship here at Cozy Cabins, and our Frontier Cabin is no exception.

This cabin model is one of our most popular due to its simple one-story design. And, we make it even easier for you by delivering and installing all our Frontier log homes right to your property.

We look forward to building the perfect log cabin for your family!



Modular - Mountaineer Deluxe Style

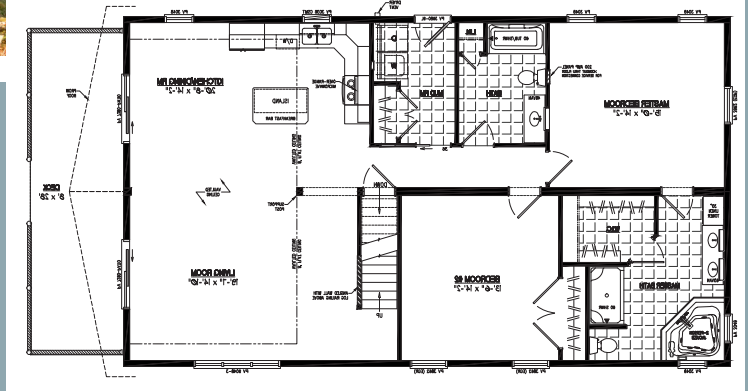


No matter if you are looking for a vacation home or log cabin to retire in, a Mountaineer Deluxe cabin from Cozy Cabins is the ideal model for any family. The 20' high ceilings in the great room create a truly open feel you'll enjoy from your couch, dinner table, or kitchen. All of our Mountaineer Deluxe log homes are manufactured in Lancaster County, PA and can be customized to include luxury options like dormers, additional porches, master bathrooms, and more.

Our clients agree that the Mountaineer Deluxe log cabin home gets you the most bang for your buck. With six trapezoid windows in the gable and four operable windows below, your interior will always feel bright and open. In addition to an open and airy space, this log cabin home also has stairs that lead up to a finished loft area complete with beautiful log railings. From the loft, you have access to a second-story unfinished room, giving you the potential for an extra bedroom, office, bonus room, or whatever you can dream up. And, for those hoping to enjoy the outdoors in their Mountaineer Deluxe log home, we've included a 6' deep porch all along the front of the cabin to allow you to take in nature unfiltered any time you'd like.



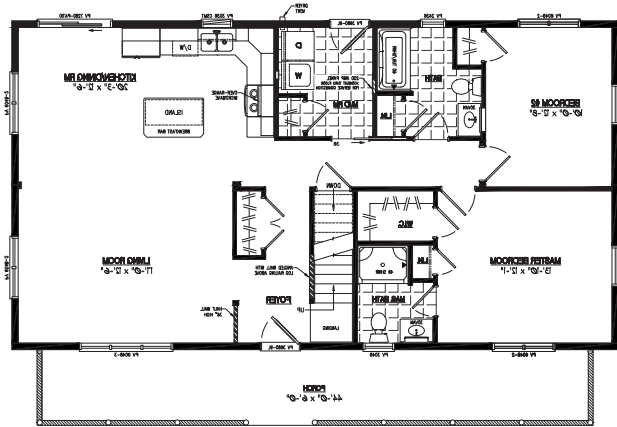
Modular - Chalet Style



Are you looking to maximize your view of a mountain or lake? Then the Chalet modular homes we offer are a great way to do just that! With their abundant glass and large deck, our Chalet cabins are the perfect place to make memories with family and friends. This Chalet log home features a standard prow roof that not only provides sun protection over the vista glass but also adds an element of visual appeal. All our ski lodge cabins boast a soaring 20' tall ceiling that will make your great room inviting and provide room for everyone to gather together easily.

When it comes to finding a ski lodge cabin to enjoy beautiful winters, Cozy Cabins is happy to offer our Chalet modular home as an option to clients. This home includes two patio doors with six trapezoid windows above, making the great room a wonder of natural light. All this glass is topped by the standard and beautiful prow roof. The stairs in this Chalet cabin lead to a finished loft area with beautiful log railings, from which you can take in your view. From the loft, you have access to a second-story unfinished room, giving you the potential for an extra bedroom, office, bonus room in your Chalet modular home. Finally, the 8' deep deck runs the width of the entire home, giving an abundance of outdoor space perfect for entertaining. If you are interested in getting this ski lodge cabin, ask about pricing today! We look forward to building your dream log home.

Modular - Mountaineer Style



With its attractive steep roofline and expansive front porch, our Mountaineer log homes are the perfect way to impress friends and family. This modular cabin comes in many options and customizable floor plans that are sure to fit your lifestyle and family size. No matter if you want a large knotty pine great room to relax in or a custom-built kitchen to serve your guests, you can do it all with your new Mountaineer Cabin. Not to mention, all our Mountaineer log homes come with a full-length upstairs room that can be finished later with bedrooms, office space, or anything you can dream up!

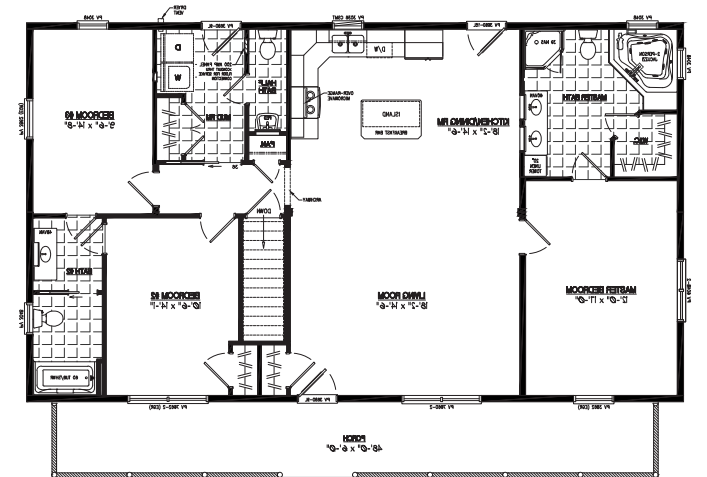
The Mountaineer Cabin is one of our most popular log cabin models, and for good reasons.

Since we create all our log cabins in our Lancaster County facility, you can trust us to construct the Mountaineer Cabin of your dreams. What makes this modular cabin unique is the following features:

- 6' deep full-length front porch
- Traditional Cape Cod look
- Expansive space
- 8' high ceilings
- Large upstairs space you can customize
- & much more!

As you can see, our Mountaineer Cabins are perfect for family vacations, hunting trips, and visits with friends. If you have been looking to buy a log cabin home as a second home or to settle down in, this model is one of our favorites!

Modular - Musketeer Style

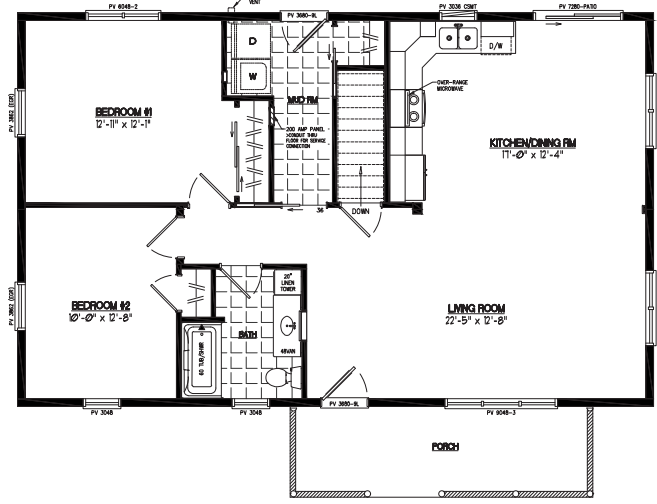


Our Musketeer log cabin offers a variety of floor plans to suit your unique needs. If you want the traditional look of a cape cod log cabin but with all the living space on one level, this cabin is perfect for you! With its gently sloping ceilings, wide-open interior, and generous porch space, the Musketeer is hard not to love. You can also take advantage of those steep rooflines by choosing our 8' flat ceiling option, which provides generous attic space.

Cabins with porches are our specialty, but the Musketeer's 6' deep full-length porch gives it an undeniable advantage. It allows you to comfortably spend your summers enjoying time outside with family and friends. And, because the porch is built outside the main rectangle of the home, the Musketeer log cabin gives you plenty of floor space.



Modular - Pioneer Style

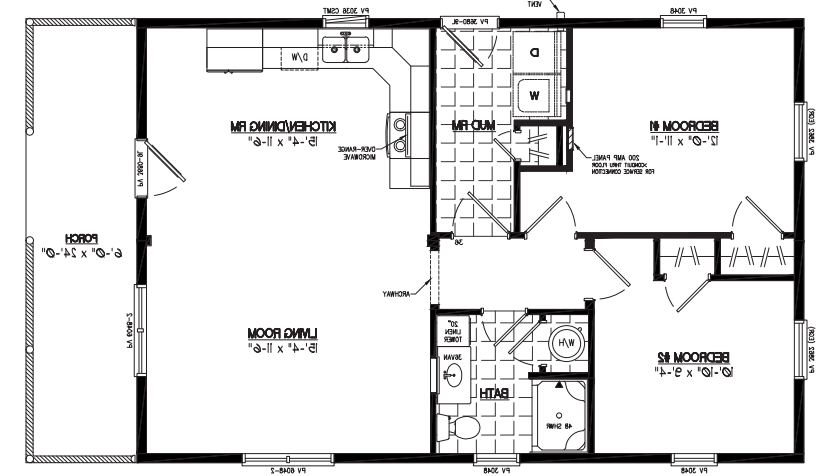


If you're looking for a cozy and beautiful ranch-style log cabin, the pioneer cabin from Cozy Cabins is a great fit for you. This one-story home has an inviting A-frame porch that is perfect for relaxing on. Inside, you'll love its gently sloping ceilings and the ever-present aroma of being surrounded by knotty pine. This log home design allows the full building rectangle to be used as a living space, making a large living room a simple feat. No matter if you want to kick back on the porch with a cup of coffee or gather around a fireplace for some quality family time, the pioneer cabin is the perfect getaway from the hustle and bustle of city life.

Standard features for this log home plan include a 6'x20' A-frame front porch, which can be positioned to the left, right, or center of the front wall. This log cabin is ideal for those who want to maximize their living space, as there is very little lost to hallways. Bedrooms can be placed at either end of the pioneer cabin, with the living space situated in the middle. And with our ability to customize parts of this ranch-style log cabin, you can choose the best size options, materials, and more that best suit your needs and lifestyle. All our cabins are manufactured in Lancaster County but can be delivered to your site across New York. If you know that you want a getaway from normal life, then invest in a log cabin from Cozy Cabins.



Modular - Settler Style



Looking for a cozy cabin to call your own? Then the Settler cabin from Cozy Cabins might be just what you are looking for! This classic cabin has been a favorite for second homes and weekend getaways for years, and it makes a great full-time residence as well. The Settler log cabin features a 6' deep full-cathedral porch that spans the entire width of the home-perfect for spending lazy afternoons lounging with a good book or sipping iced tea with friends. And because all our custom-built cabins for sale can be customized, you can choose the size and options that work best for you.

Do you love the idea of having a cabin in the woods but also want the spaciousness of an open concept floor plan? Then the Settler log cabin is perfect for you! This beautiful home features a large great room that is perfect for entertaining guests or simply relaxing with family. The bedrooms in our Settler cabin are located at the back of the house, leaving the rest of the space open for the kitchen and dining area. Don't forget about the cathedral front porch, it's the perfect place to enjoy a peaceful evening or watch the sunrise. So if you're looking for a prefab log cabin with plenty of space to spread out, the Settler log cabin is a perfect choice. Get a free quote on this log cabin model or one of our other modular log homes when you call or contact us today!

CUSTOM BUILD



Are looking you looking for a custom home? Let North Country Storage Barns build your dream home!

Kozy Kabins, a division of North Country Storage Barns, has been constructing homes and garages in the area for over 10 years. Let Kozy Kabins make your home build smooth and stress free. Kozy Kabins has the ability to design your layout and overall look and give you both a layout and 3D drawing, bringing your dreams to life!

No need to look all over for companies to do foundation work, site preparation, electrical, heating, and building. With Kozy Kabins, most aspects are a one stop shop as we deal with the many facets of construction within our company

Check out our website for updated projects we have completed and to learn more about custom homes!



STANDARD GARAGE



You're dreaming of owning your own garage but have been putting it off because you think it will be too expensive or time-consuming. Think again! At North Country Storage Barns, our standard construction option is the best value for building a garage on a budget. You can finally have the extra space to store your car, lawnmower, or even use as a workshop. A garage with an option of being placed on a cement block foundation. We have sizes and building styles that are economical and affordable. We provide excellent value for your investment as we build your dream garage within your budget.

Standard Garage Features

- 2" x 6" x 8' Walls
- 50 year LP Smart Panel Siding
- One 16' x 8' overhead door or 2- 9' x 8' doors (solid, insulated)
- 1-36" Metal entrance door with windows
- Architectural Shingles (Limited Lifetime Warranty)
- 4-30" x 48" windows (vinyl, single hung, no grids, with screens)
- Choice of 13 Paint Colors for base and trim colors
- Engineered 5/12 pitch truss with 1' overhangs
- 5/8" roof sheathing and felt paper
- Vented ridge and vented wooden soffit
- House Wrap
- The concrete foundation includes two rows of blocks

Options available upon request

- Electrical Package
- Custom Paint Color
- Garage door openers
- Custom overhead doors
- Metal roofing
- Vinyl or log siding, etc
- Painted overhead doors
- Steeper roof pitch
- Windows with grids
- Driveway



GAMBREL GARAGE



Maximize your space in our Gambrel Garage! This model gets you more space upstairs to do what you wish with than our traditional Cottage garage! One of the greatest advantages to having a gambrel garage is that the shape of the roof provides the maximum amount of usable space out of every other roof style. This means more garage storage or more space for an office, or perhaps an art studio?! Let us customize the garage how you would like - Including finishing it off!

Gambrel Garage Features

- 2" x 6" x 8' Walls
- 50 year LP Smart Panel Siding
- One 16' x 8' overhead door or 2- 9' x 8' doors
- 1-36" Metal entrance door with windows
- Architectural Shingles (Limited Lifetime Warranty)
- 4-30" x 48" windows (vinyl, single hung, no grids, with screens)
- Choice of 13 Paint Colors for base and trim colors
- Engineered 5/12 pitch truss with 1' overhangs
- 5/8" roof sheathing and felt paper
- Vented ridge and vented wooden soffit
- House Wrap
- Stairway and 3/4" subfloor in attic area

COTTAGE GARAGE



Perfect for storing your car, truck, or motorcycle. Our Cottage Garage series provides the benefits of a detached garage without the added cost that comes with a contractor. Whether you're looking to store your vehicle, your garden equipment, or simply looking to declutter your current space; our Cottage Garages are the perfect fit. Built with reinforced floors and the high craftsmanship that is our trademark, our garages will keep your vehicles dry and safe from the elements.

Cottage Garage Features

- 2" x 6" x 8' Walls
- 50 year LP Smart Panel Siding
- One 16' x 8' overhead door or 2- 9' x 8' doors
- 1-36" metal entrance door with windows
- Architectural Shingles (Limited Lifetime Warranty)
- 4-30" x 48" windows (vinyl, single hung, no grids, with screens)
- Choice of 13 Paint Colors for base and trim colors
- Engineered 7/12 pitch truss with 1' overhangs
- 5/8" roof sheathing and felt paper
- Vented ridge and vented wooden soffit
- House Wrap
- Stairway and 3/4" sub-floor in attic area
- The concrete foundation includes two rows of blocks

Cottage Garage Upgrades

- Electrical Package
- Custom Paint Color
- Garage door openers
- Shutters
- Vinyl siding
- Cupola
- Weather vane
- Insulated attic room
- Dormers
- Driveway
- Stone entrance with a turn around
- Lift Rental



Warranty Information

North Country Storage Barns provides a limited warranty for materials and workmanship on the products which it sells. The start for this limited warranty is the date of purchase or completion of installation, whichever is later.

- 1. This limited warranty shall extend for a period of one (1) year and shall warrant the workmanship and materials of the product purchased.
 - 2. This limited warranty is limited to replacement of defective materials and correction of defective workmanship. It shall not include any incidental or consequential damages.
 - 3. This limited warranty is in addition to any other manufacturers' warranties as to component parts which shall be passed along to the purchaser.
 - 4. This limited warranty is not transferable and is personal to North Country Storage Barns' purchaser.
 - 5. This limited warranty shall be void in the event that substantial work has been done by others - including the owners - on the item purchased.
- North Country Storage Barns shall not be responsible for correcting work or replacing materials which have been damaged or added as a result of

- someone else's work on the product.
- 6. Claims pursuant to this limited warranty must be filed within thirty (30) days of discovery of the alleged defect by contacting North Country Storage Barns at 32260 US Route 11 South, Philadelphia, New York 13673, (315) 642-0209. Customers must cooperate with North Country Storage Barns in completing all necessary forms and allowing access to the site to inspect and determine any problems and to make any necessary corrections.
 - 7. North Country Storage Barns agrees to evaluate claims in a timely manner and to perform corrective work as soon as reasonably possible.
 - 8. Excluded from this warranty are:
 - A. Any damage caused by acts of God including lightening, gale or gusts, hailstones, hurricane, tornado, earthquake, explosion, flood, fungus contamination, solid objects falling on the roof or any other causes except ordinary wear and tear by the elements.
 - B. Any damage caused by settlement, distortion or cracking of the foundation upon which the product is placed unless such foundation was installed by North Country Storage Barns.

- C. Any damage if the product has been altered after initial installation whether any such alteration is by structural addition, changes or replacement.
- D. Any costs incurred for repair or replacement not authorized in writing by North Country Storage Barns.
- 9. No action for breach of this limited warranty or any other action against North Country Storage Barns relating or arising out of the product purchased shall be brought later than one (1) year after any cause of action has accrued.
- 10. Should any part of this warranty be found to be unenforceable for any reason whatsoever, it shall not affect the enforceability or validity of the remaining sections.
- 11. This limited warranty replaces any and all other oral or written warranties, liabilities or obligations of North Country Storage Barns. There are no other warranties which extend beyond the limited warranty described in this document.
- 12. THIS LIMITED WARRANTY DOES NOT INCLUDE ANY LIABILITY FOR INCIDENTAL OR CONSEQUENTIAL DAMAGES.

Site Preparation

1. Once you have checked with your local official for placement of the structure purchased and have approval, clear out any trees, shrubs or brush in that area, and then stake out the exact dimensions of your structure. Add two feet to the length and width of the structure. This allows for optimum drainage. If this is not done, the drainage from the roof will create puddles / ruts in the ground. They will splash up on the bottom sides of the structure during every storm. The gravel base will prolong the life of your new structure.



2. Before the shed is delivered we will come with a truck and trailer with proper equipment to remove 4" to 6" of sod or lawn. Let us know where you want it. Additional fees apply to take it away and dispose of it.



3. Then, we will fill that area with ¾" – 1 ½" crusher run stone. Gravel yards commonly call it #2 crusher run. This stone will be tampered down and laser leveled to assure that the designated spot is perfectly level. The stone will be at least four to six inches in thickness. Additional stone might be required to make the designated location level. (Your site must be within 6" of level to avoid additional loads of stone and associated charges)



Please note:
Cinder blocks are not recommended. If you block and level smaller units, patio pavers are the best product for this application. North Country Storage Barns is not responsible for ruts or damage to the lawn during site preparation or delivery. A concrete base for a storage shed or vehicle storage unit is not needed. A crusher run base is the best for structures designed with pressure treated bases. Once the structure is placed, landscaping around the edge is recommended for aesthetic purposes and to hold the gravel in place. Pricing applies within 30 miles of Philadelphia, NY. Outside of the 20 mile radius, a \$6.00 per mile fee will be charged (one way).

Delivery Details/Moving an Existing NCSB Structure

Please first consider if there is enough room for North Country Storage Barns to maneuver and put the structure in your desired location. Our delivery trucks are 18' long and the special trailers are either 26' or 40' in length. We need approximately 36' to 50' in length depending on what trailer is used. The path to get to your location should be free from trees, shrubs, power lines and septic tanks. The overall width should be at least 2' wider than your building, and at least 14' in height clearance.

The trailer has wheels that recess down from the middle, so that the trailer can move side to side without the truck moving. This allows the truck and trailer to jack knife itself to place the structure in the most difficult of places. The truck is typically a Dodge 4500 crew cab. Your structure can be spun at time of delivery, as long as space allows, assuring proper placement.

When you're called for a delivery appointment, be sure to let the delivery manager know how it should be loaded on the trailer to make the delivery process speedy.

If the truck and trailer are not suitable for the delivery area, we will use the mule for an added fee of \$100. North Country Storage Barns is not responsible for any damage that might occur to your property during delivery. Please be sure to have the area free from debris to limit damages. Customers are responsible for all zoning codes, permits, and associated fees before delivery is made.

- Please note:**
- The first 20 miles are free from the location of purchase.
 - Additional fees are \$6 per mile one way from the location of purchase to the delivery location (door to door).

Relocation Services

- 8', 10', and 12' wide structures - base charge of \$350 + \$6 per mile one way
- 14' wide structures - base charge of \$500 + \$6 per mile one way
- The mileage fee starts from the Philadelphia office to the farthest point of the move.
- Any structure not produced by North Country Storage Barns cannot be moved by our company.
- Prices are subject to change and additional charges will incur if the pick up or drop off sites are difficult to access
- Schedule your move at ncsbarns.com. Click on "delivery" at the bottom of the web page and complete the form on-line.



Sales Terms & Conditions

North Country Storage Barns agrees to provide all materials or product as specified and to perform all labor as specified. North Country Storage Barns is not responsible for ruts or lawn damage resulting from delivery of any building or product. North Country Storage Barns reserves the right to change or cancel delivery dates due to weather or conditions deemed unsafe for delivery.

All structures built by North Country Storage Barns have a (1) One Year warranty on materials and labor from posted delivery date of product. Additional costs may be incurred for extended delivery times (beyond the first hour). All custom orders require a 20% nonrefundable deposit, balance payable on delivery unless specified otherwise. Your signature on the sales order indicates your agreement to these basic terms and conditions. These Terms and Conditions are subject to change without notice.

North Country Storage Barns accepts Master Card, Visa, and Discover, as well as checks and cash for payment of buildings. A down payment of 20% is required when placing an order. The balance is due upon delivery of building. Down payments can be made with check, cash or by credit card.

Northern Credit Union

Custom Built Loan Solutions

With a loan from our local partner, Northern Credit Union, you can get the cash you need without the hassle. Northern believes in giving you the credit you deserve.

Plus, Take Advantage Of These Great Benefits

- Highly competitive rates
- Trusted local partner
- Solutions tailored to your needs
- No collateral is required in most cases
- Fast decisions
- Sign for your loan electronically
- Apply online
- Members can apply from Online & Mobile Banking
- Connect with us through Video Banking

PowerPay is a fintech company that became a national success through a simple, core idea: let consumers make large and expensive purchases through low and affordable monthly payments, allowing them to purchase what they really need and want.

Benefits of Financing with Power Pay

- Low rates and long Terms mean the lowest monthly payment
- Available credit for FICO 600+
- No Credit cards
- Fast instant approval online



What is Rent-To-Own? Rent-To-Own is a rental program that allows you to make monthly payments on any Shed, Gazebo, or Playground for the immediate use and enjoyment of the product you choose and comes with the option to obtain ownership. It's just like renting any other item with the exception that once the payment terms are met, you own the item. This is available to any qualified customer that lives within 150 miles of Philadelphia, New York.

Why choose Rent-To-Own? For many, finances are tight, so to get what you need, monthly payments work better than trying to save up a lump sum. This allows you to have the new Shed, Gazebo, or Playground in your yard without having the inconvenience of traveling to an off-site storage building, public park, or city playground. Just think of having that storage space in your yard or enjoying the outdoors in your Gazebo or Playground.

Will I pay more? Yes, you will pay more than purchasing the item for cash, but just like any other rental, fees are involved to cover the risks for North Country Storage Barns to offer this service.

How does it work? Pick out any Shed, Gazebo, or Playground and our sales staff will calculate the monthly payment and figure out your initial payment

which will cover set up, delivery, and your first monthly payment. We require a security deposit in addition to your first month's rental payment. Your monthly payments will not start until 30 days after your item is delivered.

Can I really have any Shed, Gazebo, or Playground on Rent-To-Own? Yes, but our Rent-To-Own program is not available on a Shed, Gazebo, or Playground if the price is over \$10,000.

Can I modify it? Yes, once the item is paid in full and you receive the certificate of ownership, you can do anything you want to the item.

I might want to buy it early or put money toward ownership while I am renting. You are welcome to pay off the rental early and there is no penalty for early pay off. In fact, you will save money depending upon where you are in the rental term. Since this is a rental transaction, it is not financing. We encourage our customers to make the monthly rental payments and to exercise their early purchase option when they can afford to do so. Extra money included with your monthly payment would be applied to your deposit. If you want to lower your monthly payments, you can put money in our optional reserve account. Your rental payments will be lower and so will your total cost of ownership. Ask any sales person for more information

about reserve accounts.

What items are available for RTO and how long are the terms?

- Sheds - 36 months
- Gazebos - 36 months
- Playgrounds - 36 months
- Chicken Coops - 24 months
- Dog Kennels - 24 months
- Run In Horse Barns - 24 months
- Swing Sets - 24 months

What is needed to have a rent-to-own product?

1. Completed application
2. Copies of a drivers license and major debit / credit card
3. First payment and security deposit paid
4. Sales order documenting the details of the structure ordered
5. Signed contract (signed in store or emailed)

Steps 1-4 must be completed first and then a contract will be written.



Rent-To-Own is an affordable solution that rewards you for completing a 36 or 24 month lease by granting you ownership of the product! At any time the contract can be paid out early at a significant savings to you.

North Country

STORAGE BARNs



*Come to Me, all of you weary and burdened, and I will give you rest.
Matthew 11:28*

HOME OFFICE:

32660 US Route 11
Philadelphia, NY 13673
315.642.0209 Phone

SANDY CREEK OFFICE:

5780 US Route 11
Pulaski, NY 13142
315.387.2092 Phone

YORKVILLE OFFICE:

317 Oriskany Boulevard
Yorkville, NY 13495
315.793.0726 Phone

www.ncsbarns.com